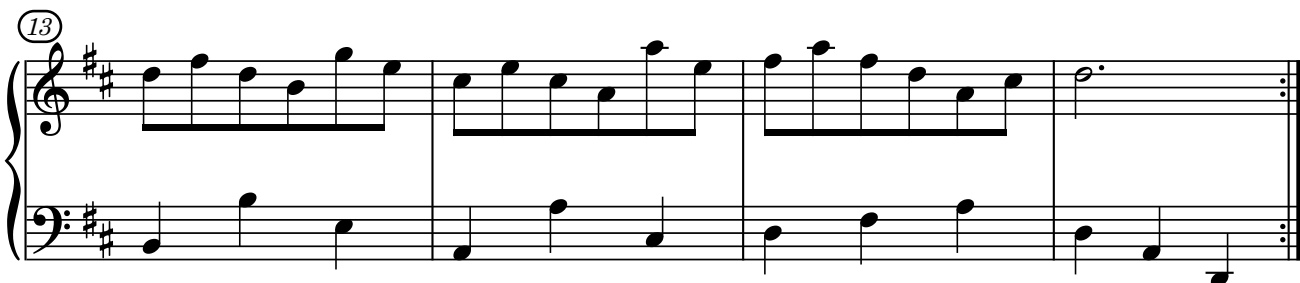
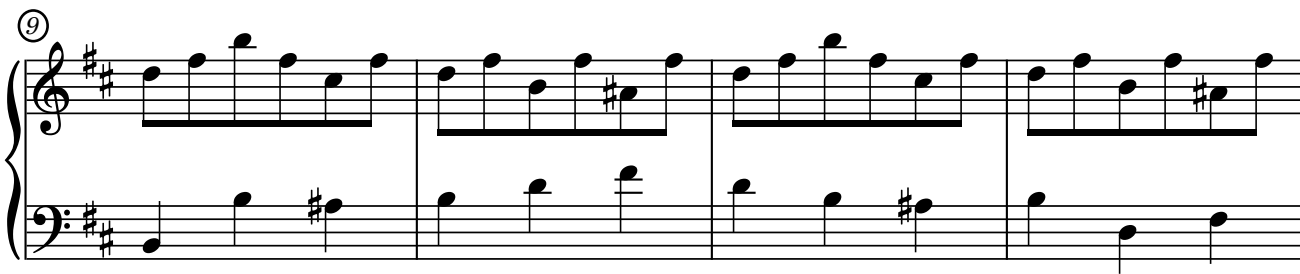
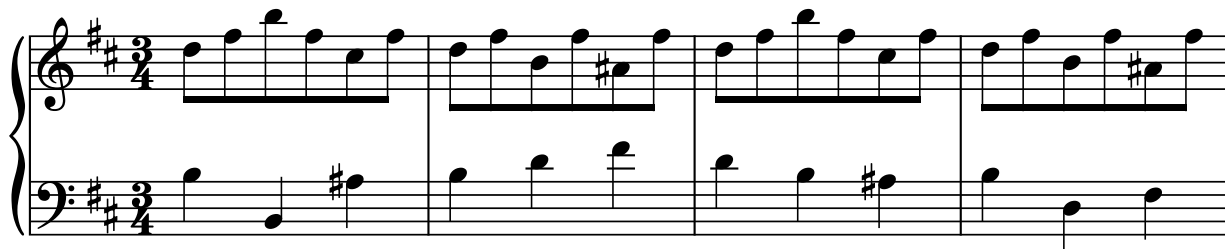


# Minuetto in Bm

Dalla Suite francese n.3 BWV 814



J.S.Bach



(17)

Measures 17-20. Treble staff: Measure 17 has a descending eighth-note line (F#4, E4, D4, C#4, B3, A3). Measures 18-20 have eighth-note chords. Bass staff: Steady eighth-note accompaniment (F#2, A2, B2, D3).

(21)

Measures 21-24. Treble staff: Measure 21 has eighth-note chords (F#4, A4, B4). Measure 22 has eighth-note chords. Measure 23 has eighth-note chords and a quarter note (F#4). Measure 24 has a quarter note (F#4). Bass staff: Steady eighth-note accompaniment.

(25)

Measures 25-28. Treble staff: Measure 25 has a dotted quarter note (F#4) and eighth-note chords. Measure 26 has eighth-note chords. Measure 27 has eighth-note chords. Measure 28 has eighth-note chords. Bass staff: Steady eighth-note accompaniment.

(29)

Measures 29-32. Treble staff: Steady eighth-note chords. Bass staff: Steady eighth-note accompaniment.

(33)

Measures 33-36. Treble staff: Steady eighth-note chords. Bass staff: Steady eighth-note accompaniment.